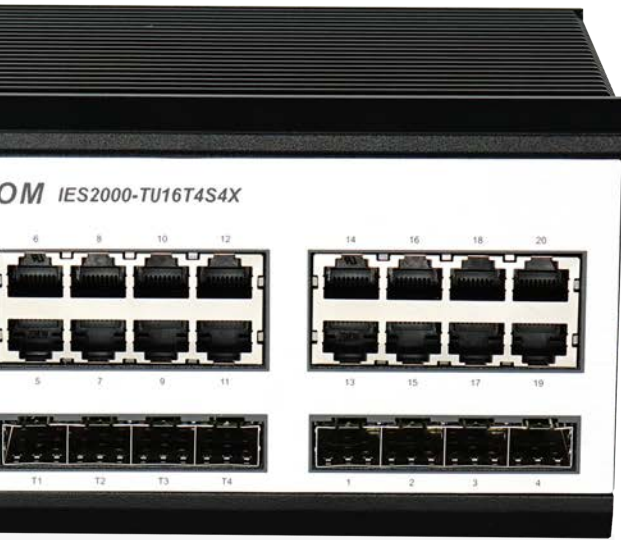


IES2000-T SERIES

Layer-3 Managed 10G
Industrial Switch



Wide-range working
temperature 800,000
hours MTBF



Advanced Hardware
Architecture and
Industry-leading Port
Density



Varied Service
Characteristics Versatile
IPv6 Solution Complete
Security Mechanism



IP40 protection 6KV
lightning protection

Product Overview

BDCOM IES2000-T series, based on the brand-new high-performance hardware and BDROS software system of BDCOM's independent intellectual property rights, supports rich Layer-2/Layer-3 routing and industrial ring network protocols. IES2000-T series adopts die-casting aluminum shell and standard 19-inch rack-mounted installation, and provides redundant wide-voltage industrial power supplies. With the reliable industrial Ethernet ring technology, its hardware-based algorithm can ensure node self-healing time less than 5 milliseconds, and the ring network self-healing time less than 50 milliseconds (typical value).

BDCOM IES2000-T series, with fanless design, low power consumption, wide temperature and wide voltage in compliance with strict industry standards, can adapt to harsh environment requirements for EMC, anti-vibration and shock-proof capabilities, IP40 protection level. IES2000-P series can be widely used in energy, transportation, industrial production, environmental protection, military industry.

Product Characteristics

Lightning protection level: 6KV. IP40 protection, industrial fanless thermal conduction.

Supports dual 220V wide-voltage industrial power input (DC model is optional). Business ports, management ports, power input terminals, and relay alarm output are located on the front panel, complying with industrial operation specifications.

Supports STP/EAPS/ERPS, Supports node self-healing time less than 5 milliseconds, and ring network self-healing time less than 50 milliseconds (typical value). Supports layer-3 static routing, dynamic routing (RIP, OSPF), Virtual Router Redundancy Protocol (VRRP). Supports virtual stacking.

Supports to form a self-healing ring between any two ports, and supports multiple independent self-healing rings. Provides Data Leakage Prevention (DLP), to quickly recover from network failures.

Supports simple network management protocol (SNMP) and cloud-based operating platform (Pallas). The mean time between failures (MTBF): more than 800,000 hours.

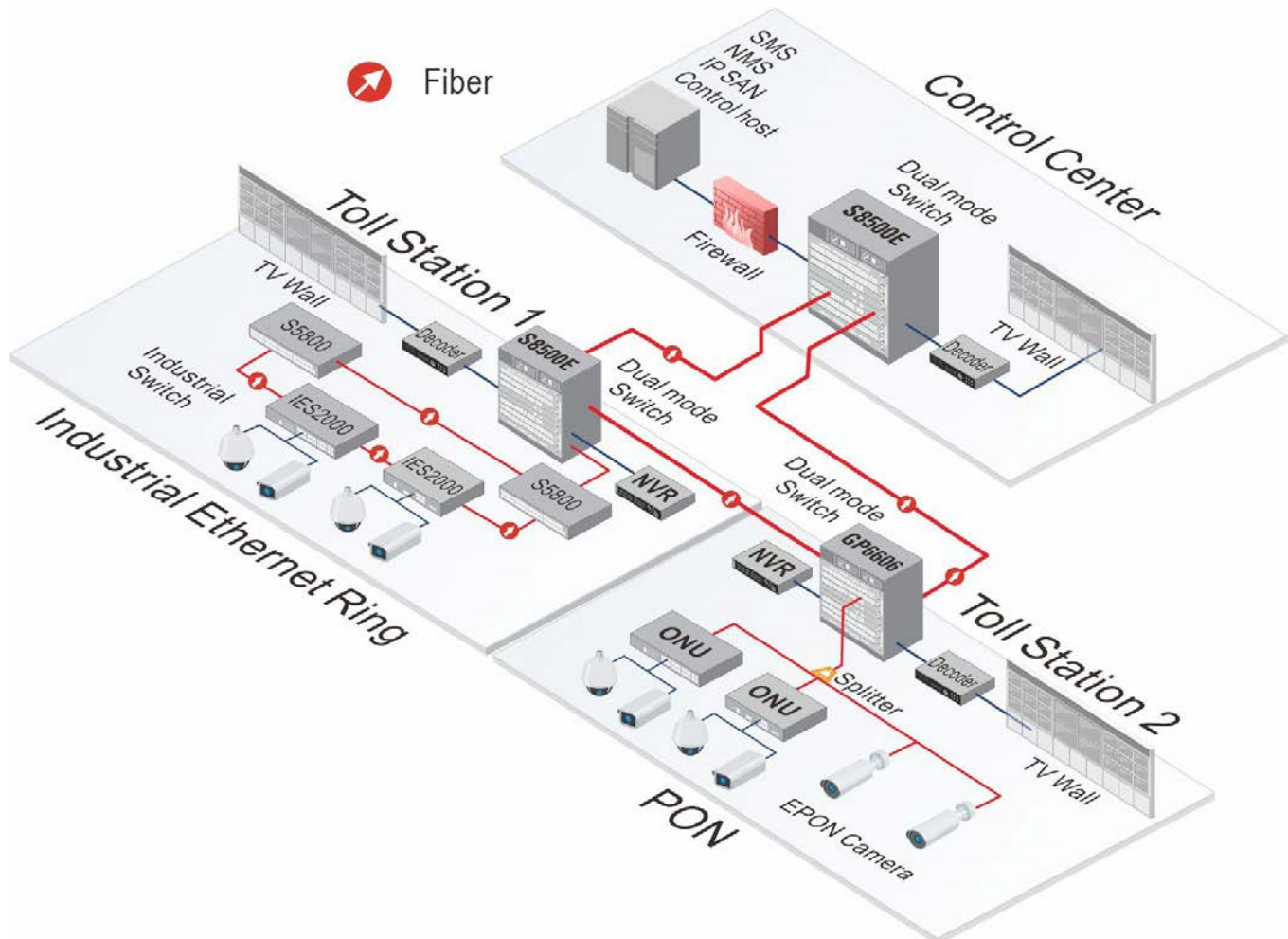
Model Lists



IES2000-TU16T4S4X

- 16-Port Gigabit RJ45
- 4-Port Gigabit SFP
- 4-Port 10G/GE SFP+

Application Diagram



Product Specifications

Item	IES2000-TU16T4S4X	
Gigabit Interface	RJ45	16
	SFP	4
10G/GE SFP+		4
Console (RJ45)		1
Backplane (Gbps)		128
Forwarding rate (Mpps with 64 bytes)		90
Chassis	Dimensions (WxDxH)(mm)	170x140x100
	Weight (KG)(empty)	2.2
Package	Dimensions (WxDxH)(mm)	300x195x145
	Weight(KG)	2.4
Power consumption	no-load	13.5W
	full-load	31W
Power supply		Dual AC or DC 100~240V
Total output BTU (1000BTU/H=293W)		105.8
MTBF(H)		>800,000
Forwarding mode		Store-forward
Flash (MB)		16
DRAM (MB)		256
MAC		16K
Buffer size(Mb)		12
Jumbo frame		9K
Total SVI		64

Features

VLAN

- 4K Active VLAN, QinQ & Selective QinQ, GVRP, Private VLAN, Voice-VLAN

Spanning Tree

- 802.1D (STP), 802.1W (RSTP) and 802.1S (MSTP)
- BPDU guard, root guard and loopback guard

Multicast

- IGMP v1/v2/v3, IGMP Snooping, IGMP Fast Leave, MVR, IGMP filter

IP

- Static route, RIP, OSPF
- IPv4/v6 dual stack

Ipv6

- ICMPv6, DHCPv6, ACLv6 and Telnet
- IPv6 neighbor discovery, Path MTU discovery
- MLD V1, MLD snooping
- IPv6 Static Routing, RIPng, OSPFv3
- Manual tunnel, ISATAP tunnel, 6 to 4 tunnel

QoS

- CAR, HQoS, MAC/IP/TCP/UDP/VLAN/ COS/ DSCP/ TOS based QoS, 802.1P/ DSCP priority re-labeling, SP, WRR, and "SP+WRR", Tail-Drop, WRED, flow monitoring and traffic shaping

Security

- Port isolation, Port security, and "IP+MAC+port" binding, MAC sticky
- DAI & IP source guard, PPPoE+,
- IEEE 802.1x, AAA, Radius and BDTacacs+
- L2/L3/L4 ACL flow identification and filtration Anti-attack from DDoS, TCP's SYN Flood, UDP Flood, etc.
- Broadcast/multicast/unknown unicast storm-control
- MD5, SHA-256, RSA-1024, AES256, etc.

Virtualization

- Support BDCOM Virtual Stacking System (BVSS)
- up to 16 stacking units

DHCP

- DHCP server/relay/client
- DHCP snooping/option82

Reliability

- Static/LACP link aggregation, Interface backup
- EAPS and ERPS
- ISSU uninterrupted system upgrade
- BVSS, ups to 16-units per stack
- VRRP
- UDLD

Management

- Console, Telnet, SSH v1/2, HTTP, HTTPS, SNMP v1/v2/v3, RMON
- TFTP, FTP, SFTP
- NTP
- ZTP
- SPAN, RSPAN

Environment

- Operating temperature/ humidity: -40~85°C , 10%-90% non-condensing
- Storage temperature/humidity: -40~85°C , 5%-95% non-condensing

Accessories

- Power cord, rackmount kits, console cable

Ordering Information

Item	Description
IES2000-T Series	
IES2000-TW8S8P	16-Port Gigabit RJ45 + 4-Port Gigabit SFP + 4-Port 10G SFP+ L3-lite Stackable Managed Industrial Switch (supports industrial ring protection protocol, operating temperature -40~85°C;IP40; supports 16-unit virtual stacking, industrial universal AC/DC power input, excluding power cable, Din-rail installation)

Copyright © Shanghai Baud Data Communication Co., LTD.2023. All Rights Reserved.

This document is BDCOM Public Information. BDCOM reserves the right to alter, update and otherwise change the information contained in the document from time to time.

